

## RECENT PROJECTS INCLUDE:

### FRASER NOBLE BUILDING, UNIVERSITY OF ABERDEEN

Major refurbishment project to provide flexible, dynamic and responsive teaching and research space appropriate to current needs

All trunking was manufactured to plan from 2.5mm galvanised steel with 8mm mild steel top chequer plates, which were galvanised after production.

Approximately 140m of trunking went into the building, much of it at awkward angles, which required extremely careful, detailed planning.



### SANDHILL STATION, LIVERPOOL

Part of £6m upgrade.

Trunking 300mm x 150mm 2 compartments made to plan from stainless steel with special tray lids to receive floor finish.

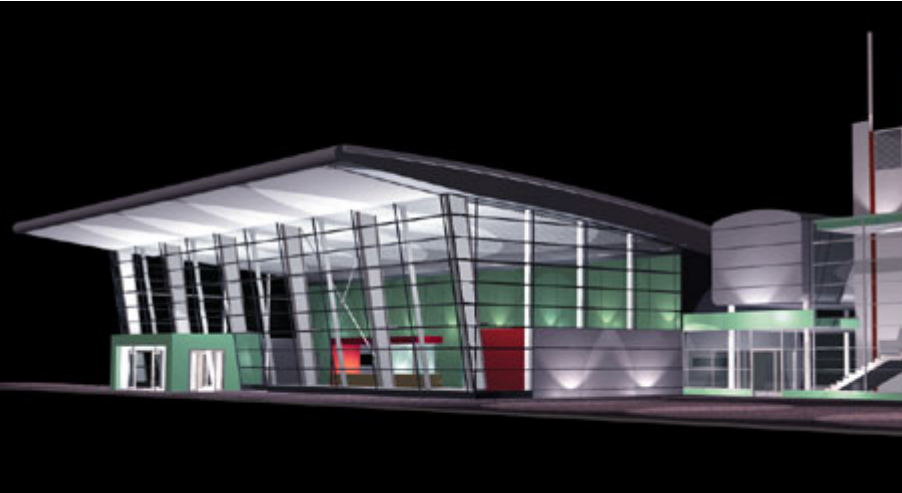
### HERBERT MUSEUM & ART GALLERY, COVENTRY

Part of £20m re-development.

Stainless steel trunking with a stainless steel chequer plate top manufactured to run along both sides of a ziz zag corridor with up lights fitted.



## RECENT PROJECTS INCLUDE:



### **EAST MIDLANDS PARKWAY NEW RAILWAY STATION**

A new multi-million pound rail station - one of the greenest ever built.

Stainless steel trunking with stainless steel chequer plate tops. Also trunking with aluminium chequer tops.

### **ROYAL FESTIVAL HALL**

Approx 700 metres of our heavy duty trunking 200mm x 100mm 2 compartment with 18mm ply covers.



## OTHER RECENT PROJECTS:

### **Derby City Hospital**

Part of a brand new £334 million super hospital.

Trunking all made to plan with aluminium chequer plate tops.

### **Vellindre Hospital Cardiff**

Trunking made to plan for MRI scanner with aluminium tops and stainless steel try top to receive floor finish

### **Halewood Learning Centre and North Huyton Learning Centre**

Special with aluminium chequer plate top

### **North Halifax Grammar school and Leeds Grammar school**

Standard SFD range

### **Sellafield Cumbria**

Trunking 50mm x 100 mm with 12mm steel tops